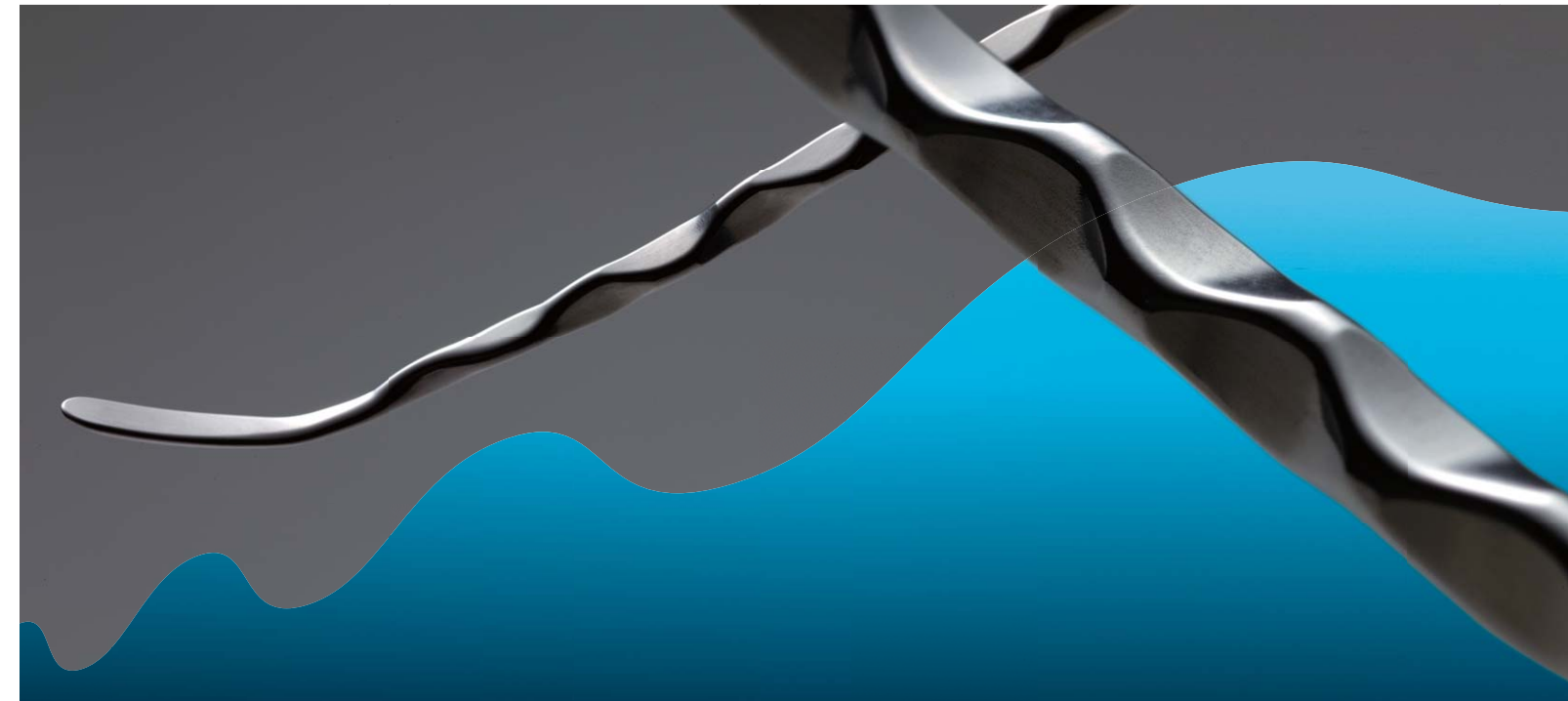


# Mizuho Instruments for Keyhole Surgery

## Malleable Instruments

### Product List

Product Code	Product Name
07-794-41	Malleable Dissector, 1.5mm Sharp, Str.
07-794-42	Malleable Dissector, 1.5mm Dull, Str.
07-794-43	Malleable Dissector, 1.5mm Sharp, Cvd.
07-794-44	Malleable Dissector, 1.5mm Dull, Cvd.
07-794-45	Malleable Dissector, 2.5mm Sharp, Str.
07-794-46	Malleable Dissector, 2.5mm Dull, Str.
07-794-47	Malleable Dissector, 2.5mm Sharp, Cvd.
07-794-48	Malleable Dissector, 2.5mm Dull, Cvd.
07-794-51	Malleable Dissector, 2.0mm Round Plate, Sharp, Str.
07-794-52	Malleable Dissector, 2.0mm Round Plate, Sharp, Cvd.
07-794-53	Malleable Dissector, 2.0mm Round Plate, Dull, Cvd.
07-794-54	Malleable Dissector, 3.0mm Round Plate, Sharp, Str.
07-794-55	Malleable Dissector, 3.0mm Round Plate, Sharp, Cvd.
07-794-56	Malleable Dissector, 3.0mm Round Plate, Dull, Cvd.
07-794-61	Malleable Ring Dissector, 5.0mm Cvd, Up
07-794-62	Malleable Ring Dissector, 5.0mm Cvd, Sideway
07-794-63	Malleable Ring Dissector, 7.0mm Cvd, Up
07-794-64	Malleable Ring Dissector, 7.0mm Cvd, Sideway
07-794-91	Malleable Suction Tube, 6Fr, Str, SUS
07-794-92	Malleable Suction Tube, 6Fr, Cvd, Up, SUS
07-794-93	Malleable Suction Tube, 6Fr, Cvd, Down, SUS
07-794-94	Malleable Suction Tube, 9Fr, Str, SUS
07-794-95	Malleable Suction Tube, 9Fr, Cvd, Up, SUS
07-794-96	Malleable Suction Tube, 9Fr, Cvd, Down, SUS
07-794-97	Malleable Suction Tube, 12Fr, Str, SUS
07-794-81	Malleable Hook, Sharp
07-794-85	Keyhole Ligation Instrument
07-794-87	Keyhole Measure




## Mizuho Medical Co.,Ltd.

MIZUHO Building 3, 3-29-3 Hongo,  
Bunkyo-ku, Tokyo 113-0033, JAPAN

Phone +81-3-3815-7101  
F a x +81-3-3818-1705  
U R L [www.mizuhomedical.co.jp](http://www.mizuhomedical.co.jp)  
E-mail [marketing@mizuhomedical.co.jp](mailto:marketing@mizuhomedical.co.jp)

Manufacturer  
**MIZUHO Corporation**  
Tokyo, JAPAN

\* Under our policy, ongoing improvements and published specifications may be subject to change without prior notice.  
\* All published CG photos and illustrations have been from images.

 <b>Caution</b>	<ul style="list-style-type: none"> <li>• Be sure not to use the product until you have carefully read the instruction manual and attached document and correctly understood their contents.</li> <li>• Be sure to carry out without fail the periodic inspections and the pre- and post-operative inspections.</li> <li>• For details about after-the-sale service be sure to inquire at our Sales Branches or the dealer from whom you have purchased this product.</li> </ul>
---	---



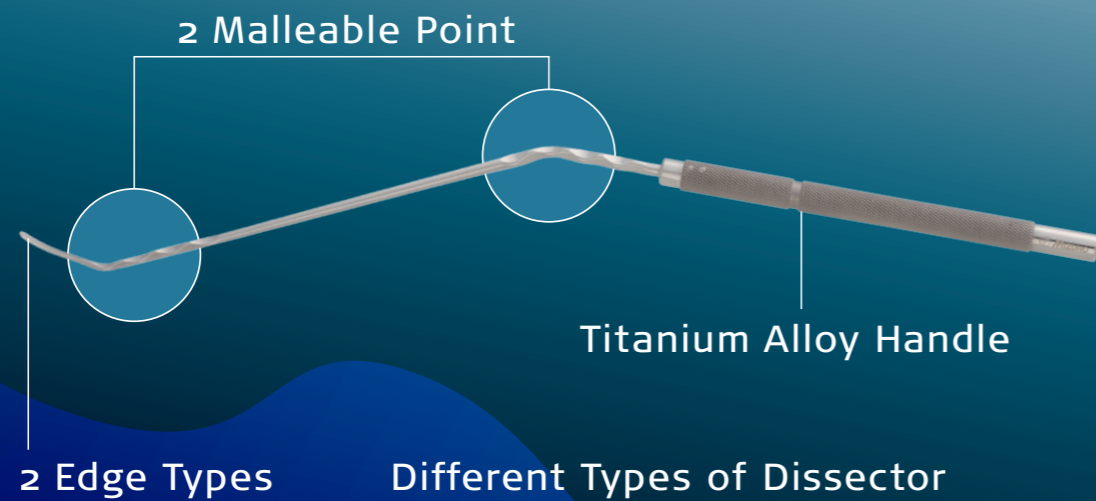
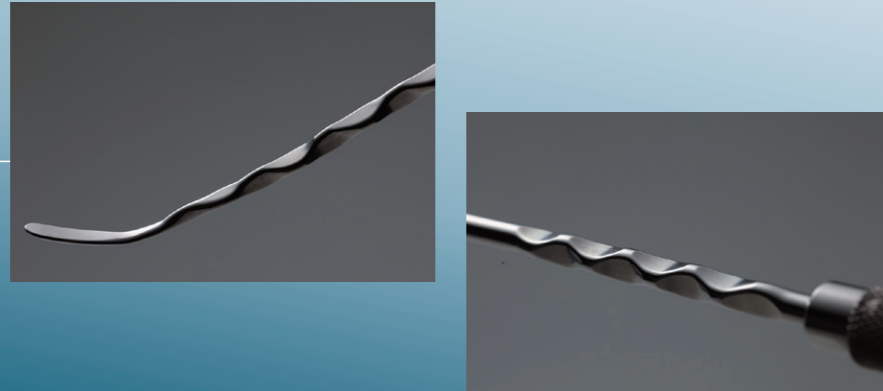
# Mizuho Instruments for Keyhole Surgery

## Malleable Instruments

# Mizuho Instruments for Keyhole Surgery Malleable Instruments

## Wave design

Multifaceted structure applied in two places on the shaft helps easiness in bending / straightening



## Features of Spatula / Round Dissector

- Separating the arachnoid plane around tumor capsule.
- Separating the tumor from brain.
- Allows stable handling of tumor bulk without causing trauma on neighbouring neurovascular structures.
- Allowing angle flexibility to avoid interference with other devices.



Designed in conjunction with

### Dr. Tetsuya NAGATANI

Director of Endoscopic Surgery Center and  
Manager of Second Neurosurgery Department  
at Japan Red Cross Nagoya Daini Hospital.

### Dr. Tadashi WATANABE

Associate professor at Aichi Medical Univ.

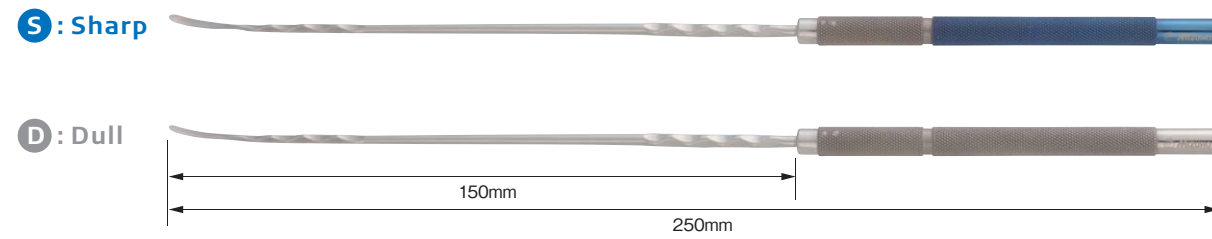
Endoscopy Team at Nagoya Univ.

photo : actual size

# Malleable Dissector

Color of handle designed for easy identification. (Blue for "Sharp" / Silver for "Dull")

Tip Profile



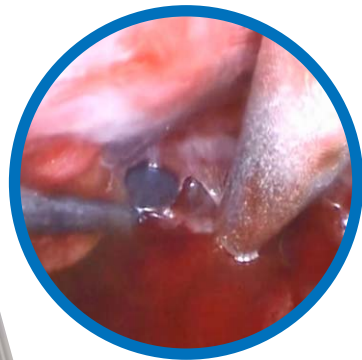
**S**: Sharp

**D**: Dull



**Sharp**

Separates "sticky" tumor & normal tissue / dura.

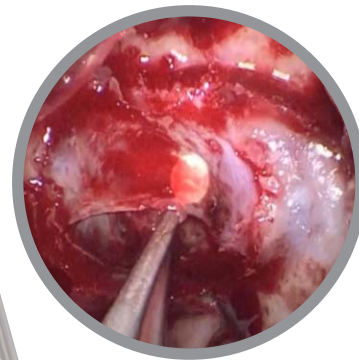


Create a border to separate tumor from normal tissue / dura.



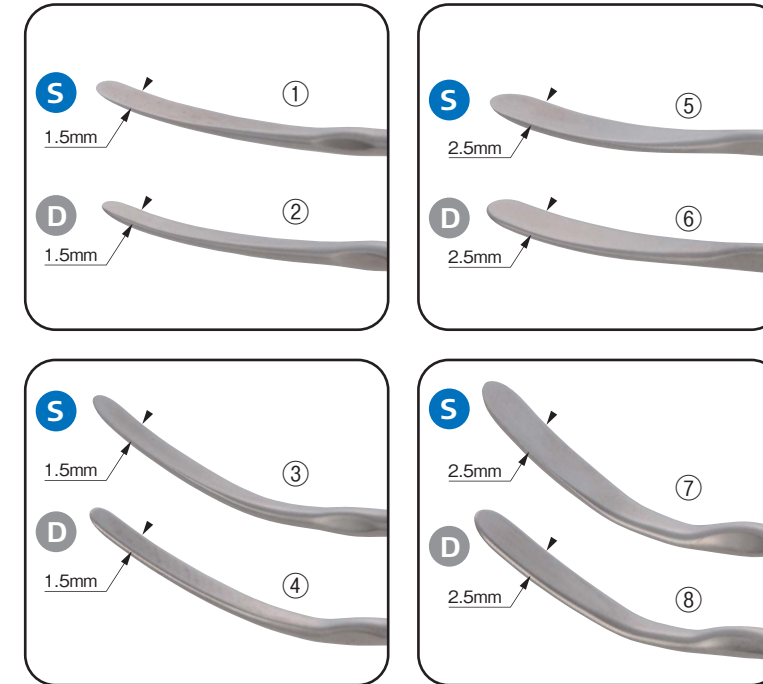
**Dull**

Gently separates tumor & normal tissue / dura.

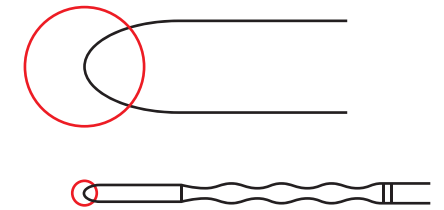


Separate tumor gently from normal tissue / dura.

## Spatula/Round Dissector 14 Types

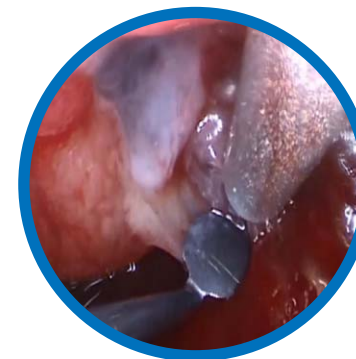


The tip of ①, ③, ⑤ and ⑦ are sharpened, so it's useful to create a border.



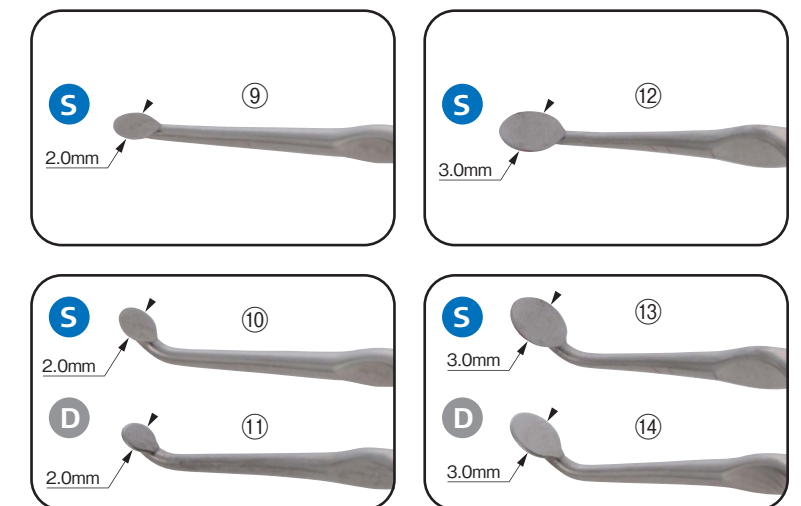
	Product Code	Product Name	Blade Width
①	07-794-41	● Malleable Dissector, 1.5mm Sharp, Str.	1.5mm
②	07-794-42	● Malleable Dissector, 1.5mm Dull, Str.	1.5mm
③	07-794-43	● Malleable Dissector, 1.5mm Sharp, Cvd.	1.5mm
④	07-794-44	● Malleable Dissector, 1.5mm Dull, Cvd.	1.5mm
⑤	07-794-45	● Malleable Dissector, 2.5mm Sharp, Str.	2.5mm
⑥	07-794-46	● Malleable Dissector, 2.5mm Dull, Str.	2.5mm
⑦	07-794-47	● Malleable Dissector, 2.5mm Sharp, Cvd.	2.5mm
⑧	07-794-48	● Malleable Dissector, 2.5mm Dull, Cvd.	2.5mm

●: Sharp    ●: Dull



## Sustainable Solidness

It is enough solidness for retractions during the endoscopic surgery.



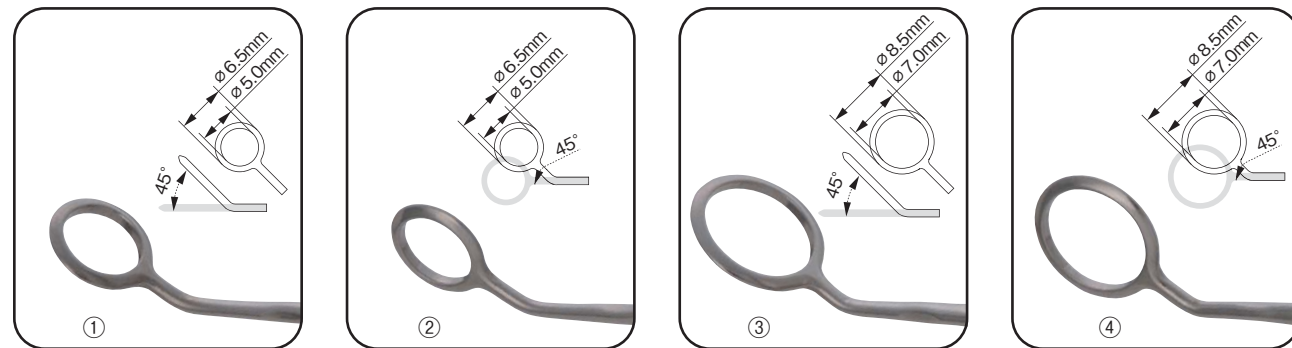
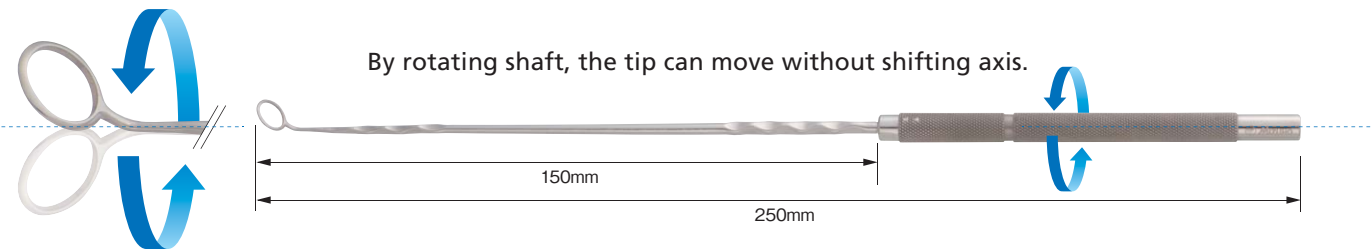
	Product Code	Product Name	Blade Width
⑨	07-794-51	● Malleable Dissector, 2.0mm Round Plate, Sharp, Str.	2.0mm
⑩	07-794-52	● Malleable Dissector, 2.0mm Round Plate, Sharp, Cvd.	2.0mm
⑪	07-794-53	● Malleable Dissector, 2.0mm Round Plate, Dull, Cvd.	2.0mm
⑫	07-794-54	● Malleable Dissector, 3.0mm Round Plate, Sharp, Str.	3.0mm
⑬	07-794-55	● Malleable Dissector, 3.0mm Round Plate, Sharp, Cvd.	3.0mm
⑭	07-794-56	● Malleable Dissector, 3.0mm Round Plate, Dull, Cvd.	3.0mm

●: Sharp    ●: Dull

# Malleable Ring Dissector

Wider diameter creates space by lifting a wide area of the tumor surface.

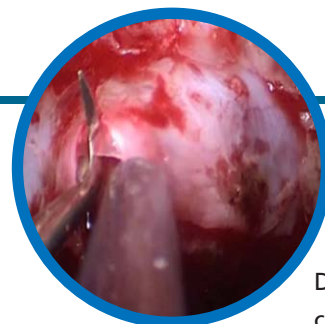
< Tapered outer ring



	Product Code	Product Name	Inner Diameter
①	07-794-61	Malleable Ring Dissector, 5.0mm Cvd, Up	5.0mm
②	07-794-62	Malleable Ring Dissector, 5.0mm Cvd, Sideway	5.0mm
③	07-794-63	Malleable Ring Dissector, 7.0mm Cvd, Up	7.0mm
④	07-794-64	Malleable Ring Dissector, 7.0mm Cvd, Sideway	7.0mm

# Malleable Sharp Hook

Hook-cut the tumor to make extraction easier.



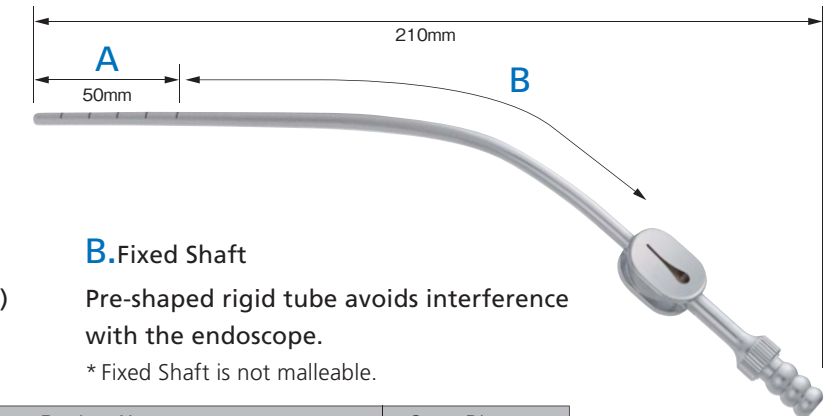
Dissecting, elevating & cutting tissues.



Product Code	Product Name
07-794-81	Malleable Hook, Sharp

# Malleable Suction Tube

Pre-shaped tip ends variations.



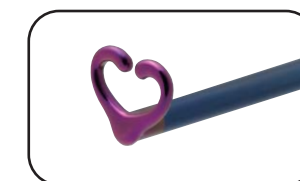
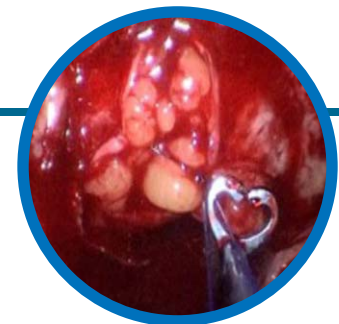
**A. Malleable Tip**  
Pre-shaped and malleable tip (50mm) to reach specific surgical angles.

**B. Fixed Shaft**  
Pre-shaped rigid tube avoids interference with the endoscope.  
\* Fixed Shaft is not malleable.

	Product Code	Product Name	Outer Diameter
①	07-794-91	Malleable Suction Tube, 6Fr, Str, SUS	2.0mm
②	07-794-92	Malleable Suction Tube, 6Fr, Cvd, Up, SUS	2.1mm
③	07-794-93	Malleable Suction Tube, 6Fr, Cvd, Down, SUS	2.1mm
④	07-794-94	Malleable Suction Tube, 9Fr, Str, SUS	3.0mm
⑤	07-794-95	Malleable Suction Tube, 9Fr, Cvd, Up, SUS	3.0mm
⑥	07-794-96	Malleable Suction Tube, 9Fr, Cvd, Down, SUS	3.0mm
⑦	07-794-97	Malleable Suction Tube, 12Fr, Str, SUS	4.0mm

# Keyhole Ligation Instrument

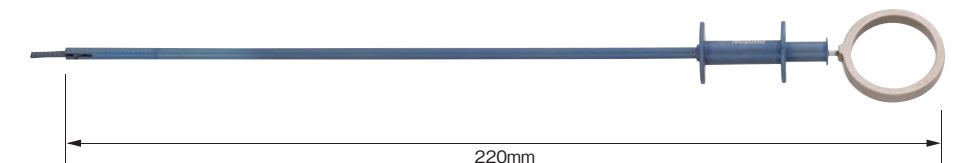
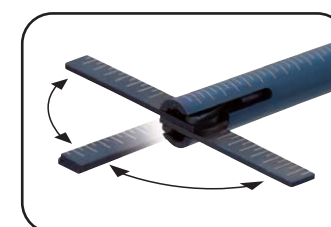
Push the knot when suturing



Product Code	Product Name
07-794-85	Keyhole Ligation Instrument

# Keyhole Measure

Measuring the size of the tissue.



Product Code	Product Name
07-794-87	Keyhole Measure